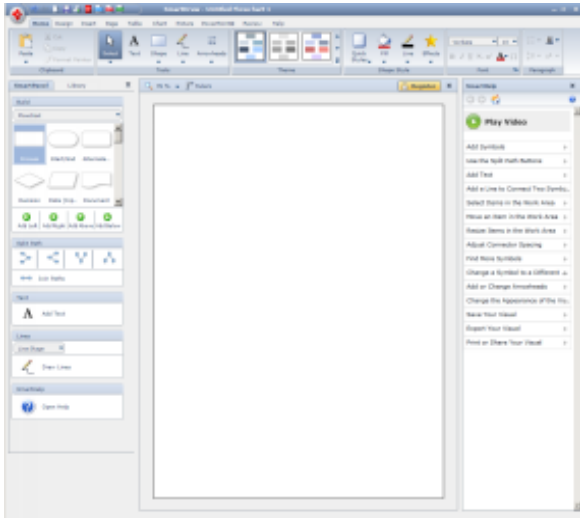


SMARTDRAW 2012 ACCESSIBILITY



RIBBON UI

For SmartDraw 2012 we have adopted the Office 2007 Fluent user interface. Most of the menus, toolbars and buttons have been replaced with an easy to navigate ribbon. The ribbon uses a combination of clear icons and descriptive labels to make find control easier than ever.

Keyboard Navigation

Use your keyboard to navigate the entire user interface. As part of the Office 2007 Fluent UI, SmartDraw includes a keytip for every control. These Keytips allow users to navigate through the ribbon and execute commands with just a few keystrokes. When a Keytip is not present, such as in a gallery, users can use the arrow keys to move around and the enter key to make a selection.

SmartPanels

No drawing required. SmartDraw 2012 uses specially designed SmartPanels so users do not have to draw to create a business graphic. With either a few clicks, or a few keystrokes users can add employees to an org chart, steps to a process, or furniture to a room. Shapes are automatically connected, spaced and set without any input from the user.

SMARTDRAW HAS ALWAYS BEEN THE EASIEST AND FASTEST WAY TO CREATE THE GRAPHICS YOU NEED TO SUCCEED. WITH SMARTDRAW 2012 IT IS EVEN EASIER, AND WE HAVE INCLUDED SEVERAL ADVANCEMENTS IN ACESABILITY. FROM THE ALL NEW RIBBON UI TO THE EXTENSIVE KEYTIPS, THOUSANDS OF READY-TO-USE TEMPLATES TO INTELLIGENT SMARTHELP: SMARTDRAW 2012 GIVES YOU THE POWER TO SUCCEED.

Libraries & Symbols

With just the keyboard you can open a library and one of our 25,000 symbols to the work area. The libraries can be navigated using just the arrow keys, and symbols can be added by pushing enter. No drawing and no mouse movement is required.

Zoom

SmartDraw 2012 makes it easy to increase the magnification of the work area, either through keyboard navigation, or the hotkeys. Zooming in is as easy pushing ctrl+ on the keyboard. No mouse required. You can just as easily zoom out by pushing the ctrl- key.

Moving Objects

Users can make subtle changes in position by selecting an object and using the arrow keys to nudge the object into the desired position.

For more information about SmartDraw visit WWW.SMARTDRAW.COM/PRODUCTS