



SmartDraw Installation Guide

System Requirements

Your computer must meet these requirements in order to run SmartDraw:

- Windows 7, Vista®, XP® or 2000®
- 512MB RAM
- 3GB free hard disk space

Installation Options

There are two ways to install SmartDraw for use in an organization:

- On a network server
- On individual client computers

Installing SmartDraw on a Network Server

SmartDraw may be installed remotely on a server and shared by multiple users with a multi-seat license. The program is loaded from the server but actually runs on a user's client machine. No registry entries or other changes are made to the server. This method of installation requires the least amount of maintenance from an Administrative standpoint as only one installation of SmartDraw needs to be maintained and updated.

- Step # 1: Set up a network share on your server and give it the appropriate permissions**
- Step # 2: An administrator to the network share should install SmartDraw to that folder.**
- Step # 3: Create Desktop Shortcuts to SmartDraw.exe for your users.**

A Note on Permissions

The administrator installing SmartDraw should have "Full Control" over the folder.

It is recommended that you give users "Change" and "Read" permissions to the folder so they can freely access the program and make changes to libraries if necessary.

In the event you wish to lock down the environment, you can set the permissions to "Read" only for the folder with the exception of one file, SDX.DLX (that is created after you install SmartDraw).

You must set the permission of SDX.DLX after it has been installed.

Installing on a client computer

The simplest way to install SmartDraw on an individual PC is to insert the program CD into the drive, wait for setup.exe to start, and then enter the serial number when prompted.

Alternatively, if your users have permission to install programs on their own PC, they can self-install from the setup.exe\setup.msi copied to a network server\share. The steps required are:

1. Copy setup.exe\setup.msi from the CD to a location on a shared server. (See Step # 1: Setting the server up properly for basic steps on how to create your shared directory.
2. Send the network (UNC) path to the setup.exe\setup.msi to your users and have them run the file.
3. When they execute the file, they will be prompted for the Serial Number to proceed with the install.

This is not however the most efficient way to install a large number of licenses onto client machines. For mass deployment of SmartDraw, you can use the Orca MSI table editor to change or bundle certain information directly into the MSI install. After modifications, you can use a distribution package to quickly install without any user action such as:

- Group Policy and the Active Directory
- Systems Management Server (SMS) or Microsoft System Center Configuration Manager
- Other remote installation software

If you are deploying SmartDraw to a Windows 7 or Vista® Operating System with User Access Control (UAC) turned on, please see the section on Installing on Windows 7 and Vista®.

Orca, a MSI Table Editor

Orca is a Microsoft utility for modifying and validating Windows Installer packages. It is a database tool intended for setup authors and administrators that works with the Windows Installer Service. This utility is a part of the Windows Installer SDK download, along with other MSI—related tools.

You can use Orca to open and modify MSI packages and ISM project files.

To download and install Orca, follow these steps:

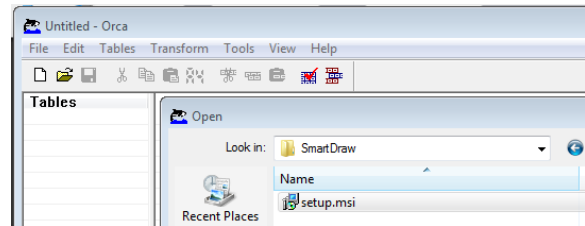
1. Visit the SDK Platform Site page on <http://www.microsoft.com> to download the Windows Installer SDK.
2. Click on that link to go to the next page to download Windows Installer SDK, which includes Orca.
3. After downloading and installing Windows Installer SDK, go to \Program Files\Microsoft SDK\Bin folder on the machine to look for Orca.msi.
4. Run Orca.msi by double clicking on it, which is the setup to install Orca on your machine.
5. After installing Orca on your machine, you will be able to right click on any MSI package and open it in Orca.

Note: Because Orca allows for direct modification of the MSI package, ISM or ISE files, which may have an impact on the project, it is recommended that users make a backup copy of the file they are about to modify.

Using Orca to bundle your Serial Number into setup.msi

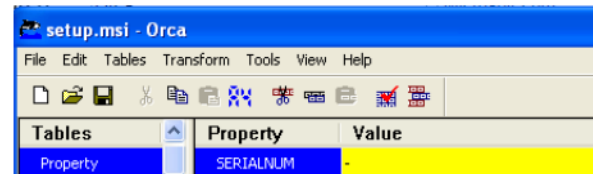
First copy setup.msi to the location where you plan on hosting the install.

Launch Orca (which should be available under the Start Programs Menu after it is installed) and under the File Menu, choose Open, and browse to your copy of setup.msi and select the “Open” button.

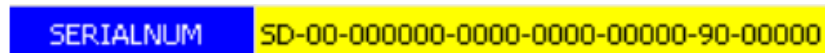


You will be presented with a list of values under the Tables menu.

Scroll down to “Property” and select it, which will populate the “Property & Value” window at the right of the menu and select “SERIALNUM”.



Click on the Value field for “SERIALNUM” and enter your serial number in.



Make sure there are no blank spaces before or after the serial number entry.

Now go to the File Menu and click “Save”. You’ve now modified your copy of setup.msi to host your serial number. It will no longer prompt you for a serial number to install with.

Now deploy the setup.msi via Group Policy or SMS.

It is a good idea to run the MSI manually on a test machine to confirm the serial number was entered properly.

Other things you can modify with Orca

By modifying the IniFile table with Orca, there are a few other items you can turn on or off to meet your IT installation guidelines.

Automatic Patching

When turned on, Automatic Patching, allows SmartDraw to check the www.smartdraw.com website to see if a patch is available for your installation of SmartDraw. If one is found, the patch will be downloaded after you exit out of SmartDraw. The next time SmartDraw is run it will find the patch and queue it to run after you exit SmartDraw. To turn automatic patching off, set the value of "SkipAutoUpdate" to "1".

Patching Notification

If automatic patching fails to download the patch or is turned off, SmartDraw will prompt the user to download the patch (if one is available) the next time SmartDraw is exited. To turn patch notification off, set the value of "SkipManualUpdate" to "1".

Survey

SmartDraw is constantly looking for feedback on how to improve our products and appreciate any feedback we receive. To disable the survey, set the value of "HideBuySurvey" to "1".

Other

You can use Orca to change other properties of the install such as the installation directory. We suggest you take an in-depth look at the Orca documentation before doing so.

Installing on Windows 7 and Vista®

With the release of Windows Vista®, a new feature called User Access Control was introduced. The main goal of User Account Control is to reduce the exposure and attack surface of the operating system by requiring that all users run in standard user mode and software is installed on a per user basis by default. For programs such as SmartDraw, which takes an average of 2 gigabytes of disk space, per user installation by machine is not recommended.

As a defense-in-depth measure, User Account Control also provides additional protection for administrators through its Administrator Approval Mode. With Administrator Approval Mode, Windows Vista® will run most applications with standard user permissions even if the user is an administrator. If a user wishes to run a program that requires administrator permissions, they must give consent through a User Account Control prompt. This helps limit malware's ability to make system-wide changes without the administrator's knowledge. However, Administrator Approval Mode does not provide the same level of security or control as a true standard user account.

The UAC control creates some difficulties when installing SmartDraw, as the Windows Installer 4.0 engine, running in the Local System account on Windows Vista®, has lesser permissions than it had on previous Windows versions and inheritance of permissions does not work properly with MSI installations.

Installing on a individual client PC

To work around this, you must install with setup.exe, instead of setup.msi. Windows Vista® will immediately detect that setup.exe is an install program that will require elevated rights and therefore display the UAC prompt in which you can give it permission to continue running. As a result, the entire install executes with elevated privileges. In contrast, when running the setup.msi directly, the UAC prompts occur later and do not elevate rights in the correct sequence of events; as a result, and most installations run with restricted permissions.

Deploying via Group Policy & SMS

Deploying via Group Policy, SMS® or other deployment systems should largely remain unaffected, as the Systems Administrator should not be affected by UAC when deploying to a Vista® client. Please contact support@smartdraw.com with your network environment details if you encounter problems.

As documentation on how to work with these new restrictions is released, SmartDraw will continue to monitor and improve this aspect of installation.